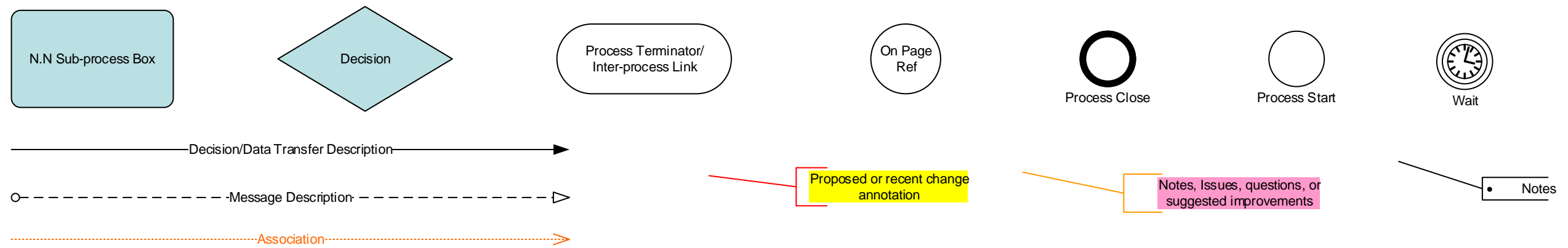
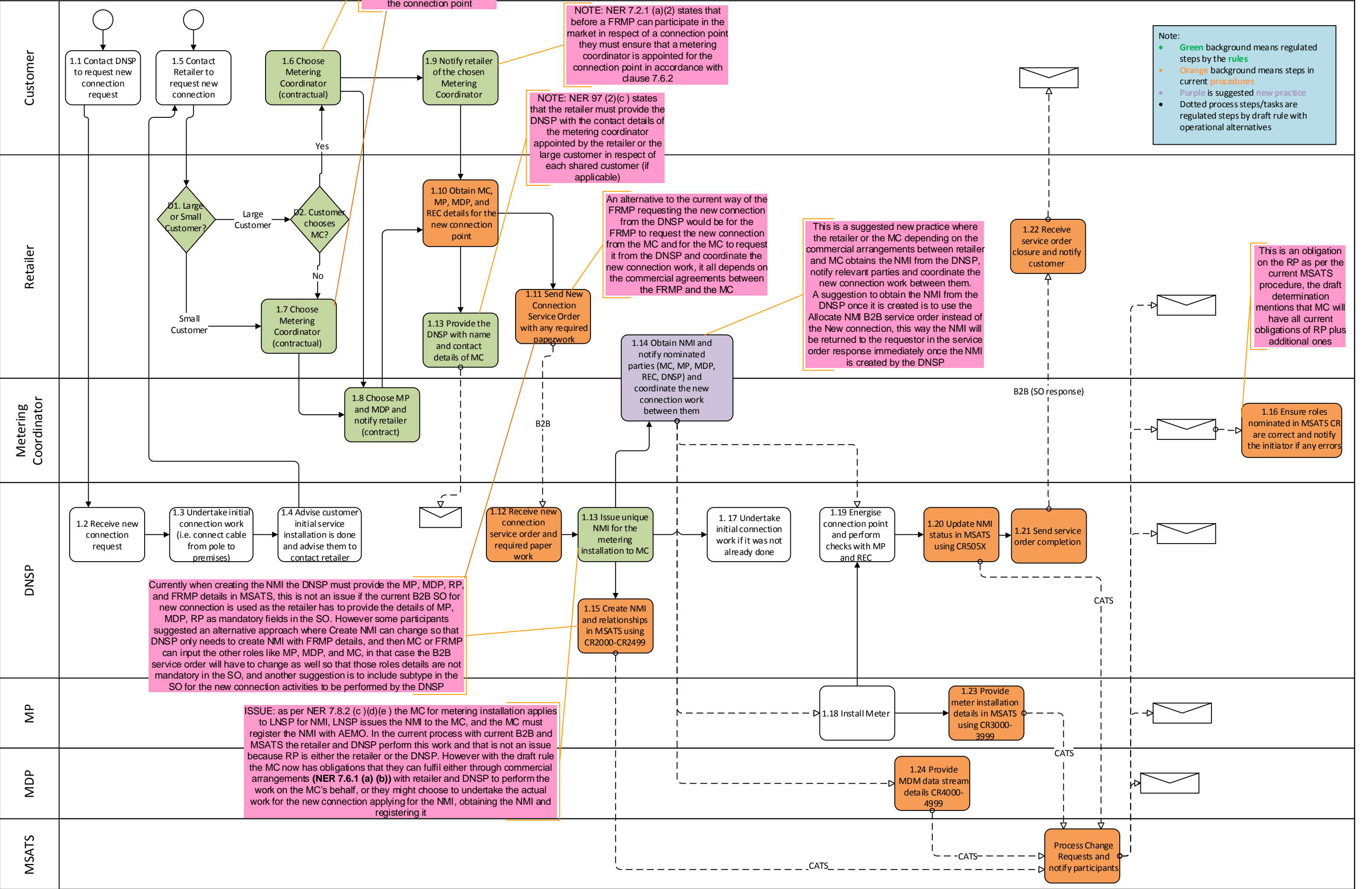


The drawing conventions used for the diagrams are as follows:



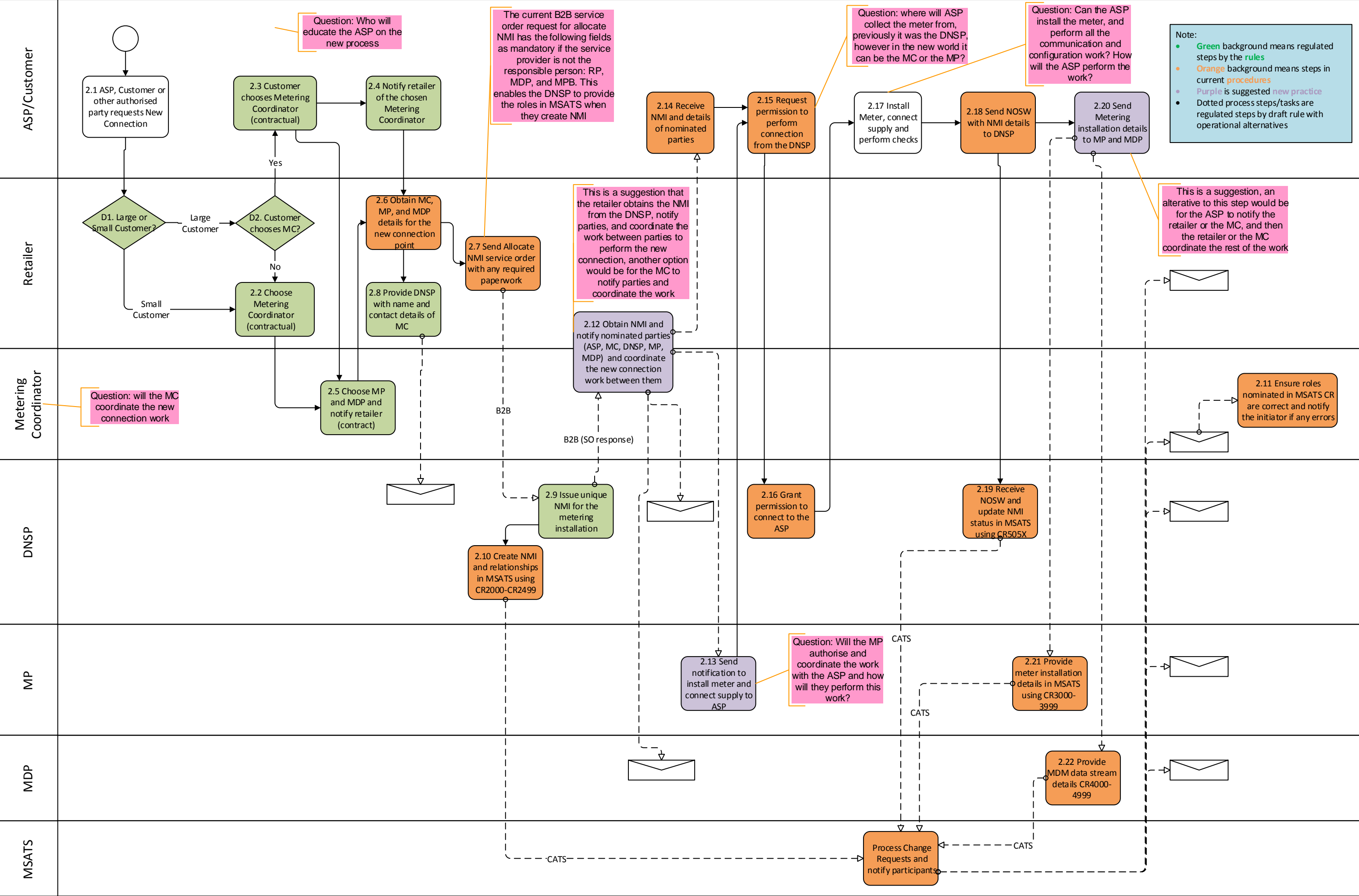
1. New Connection (Not NSW)

DRAFT



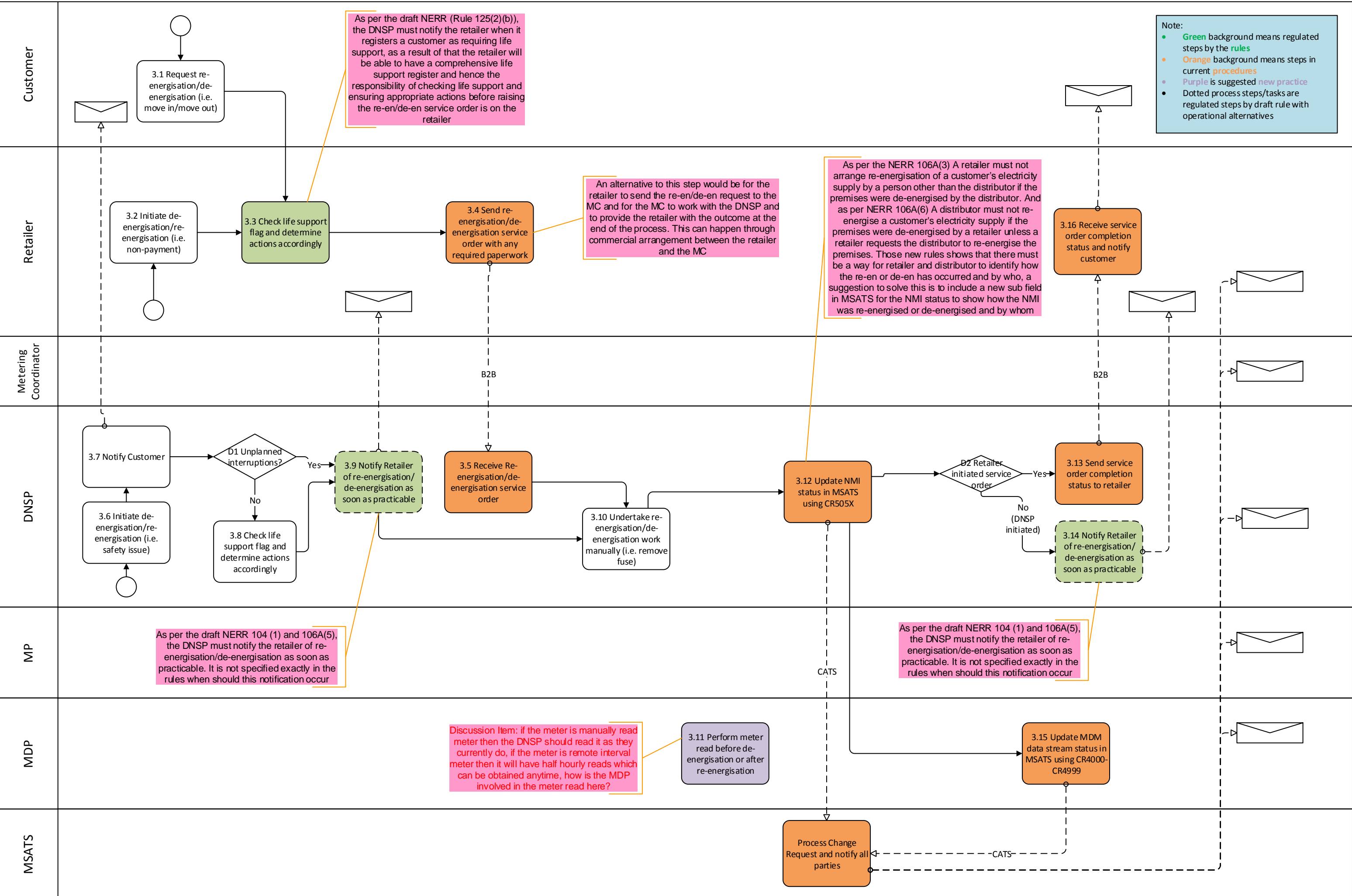
2. New Connection (NSW)

DRAFT (note: this process is currently under review by the NSW government, questions captured on the diagram needs to be considered to correctly map the process)



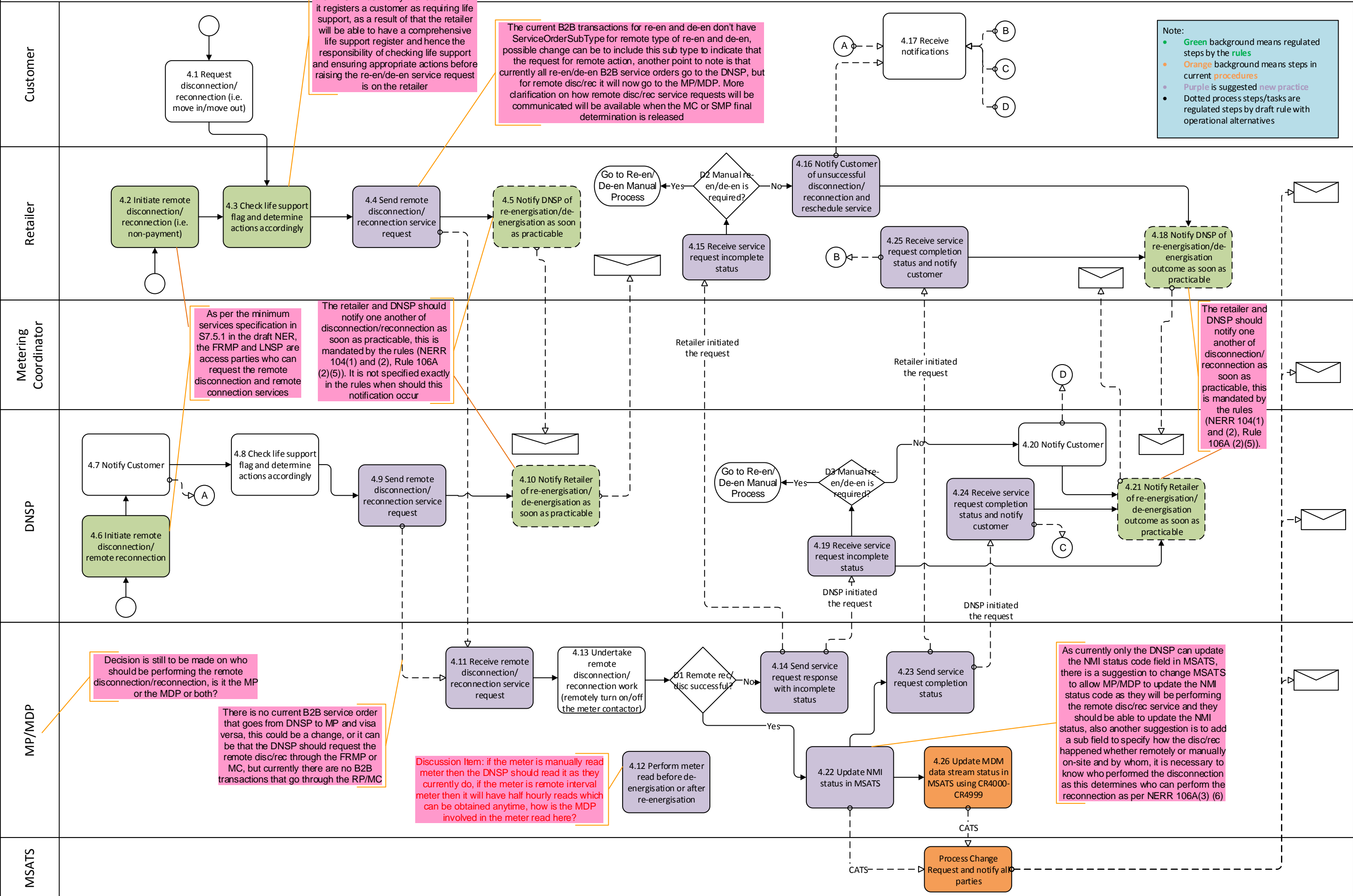
### 3. Manual Re-energisation/De-energisation (Manual On-site De-en/Re-en by the DNSP, i.e. Fuse Removal/Fuse Re-insert)

DRAFT



4. Remote Re-energisation/De-energisation (Remote Disconnection/Reconnection by the MP) MC is not involved in the service transactions

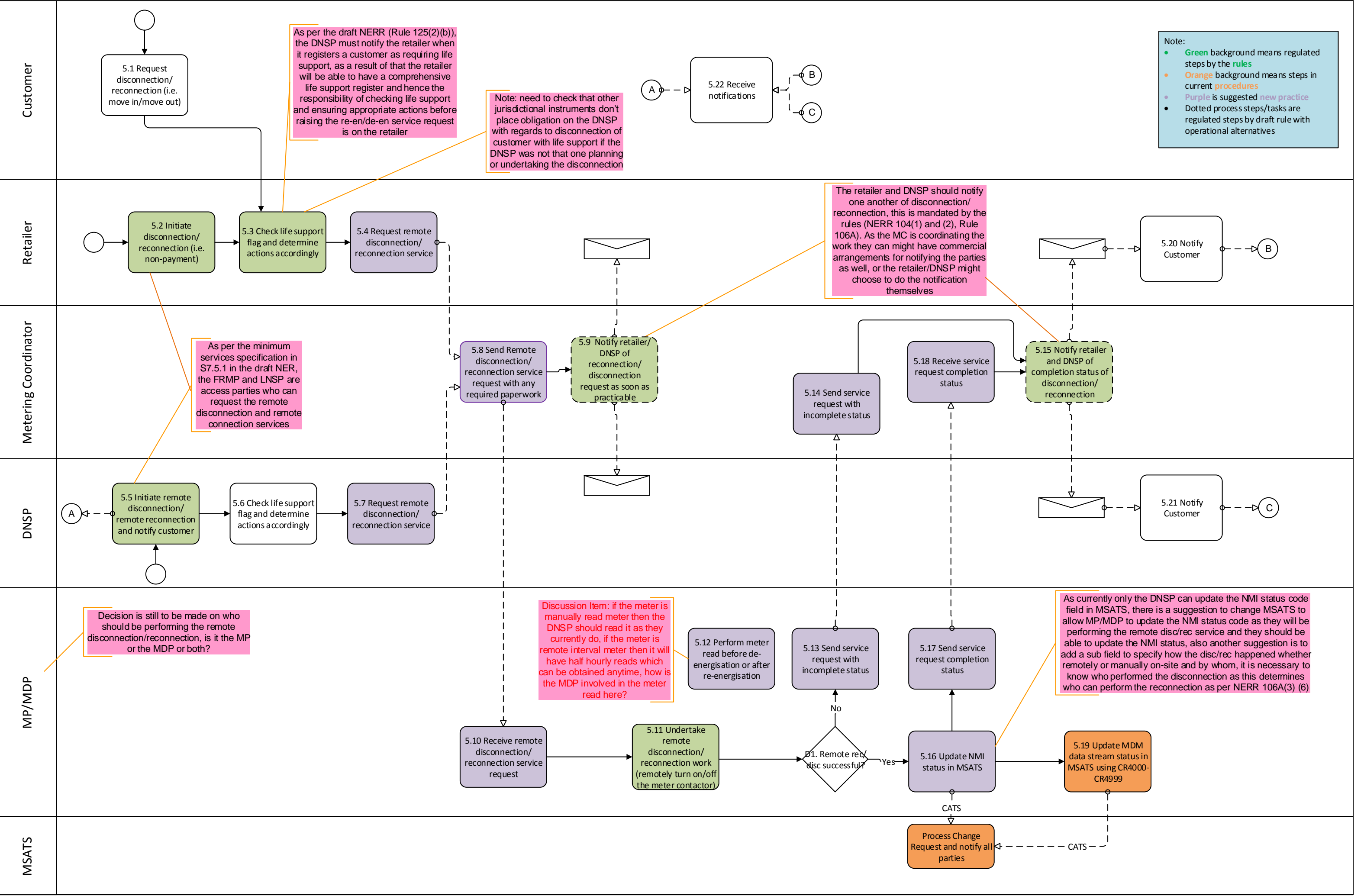
DRAFT



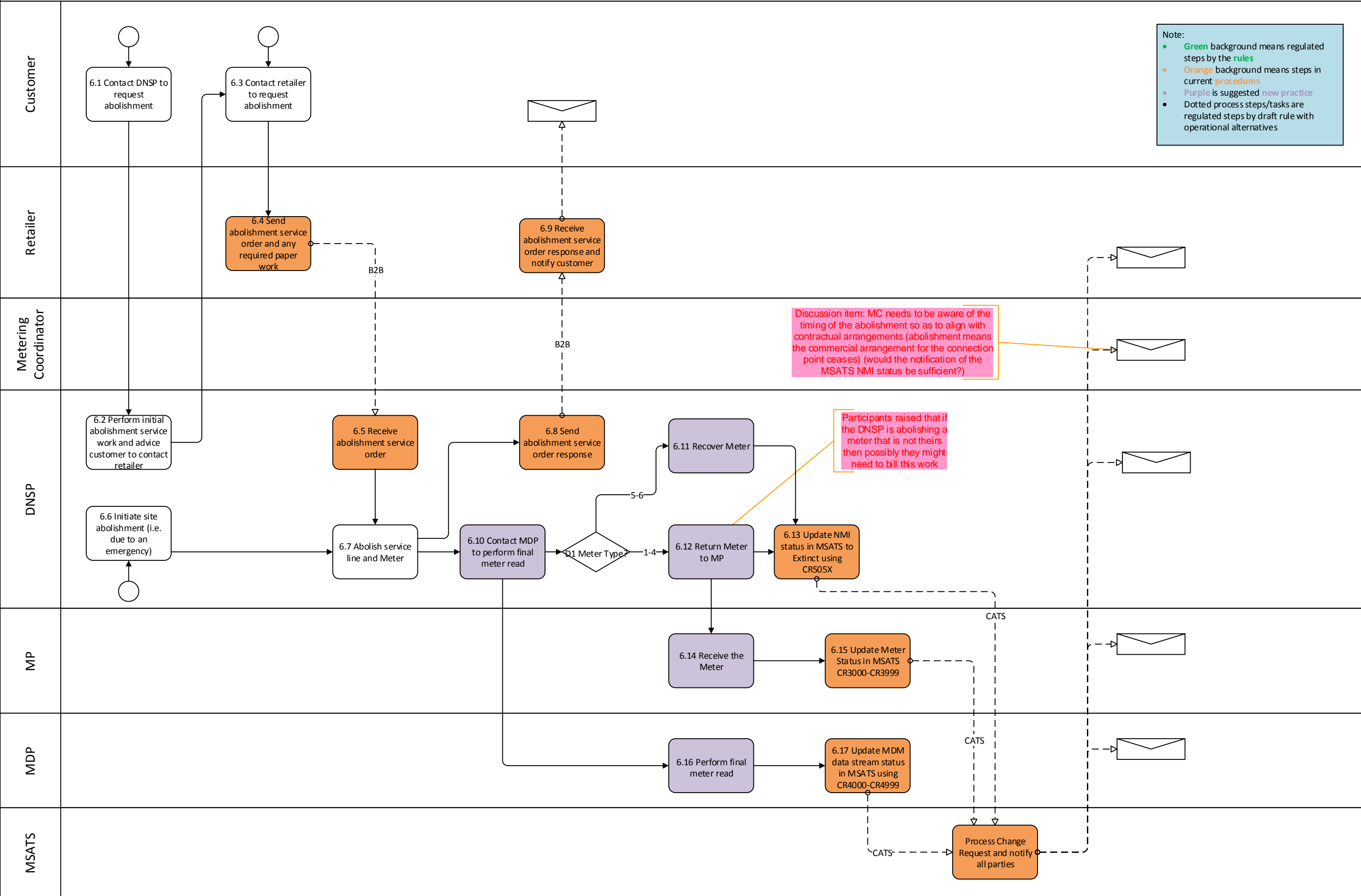


5. Remote Re-energisation/De-energisation (Remote Disconnection/Reconnection by the MP) MC is involved in the service transactions

DRAFT

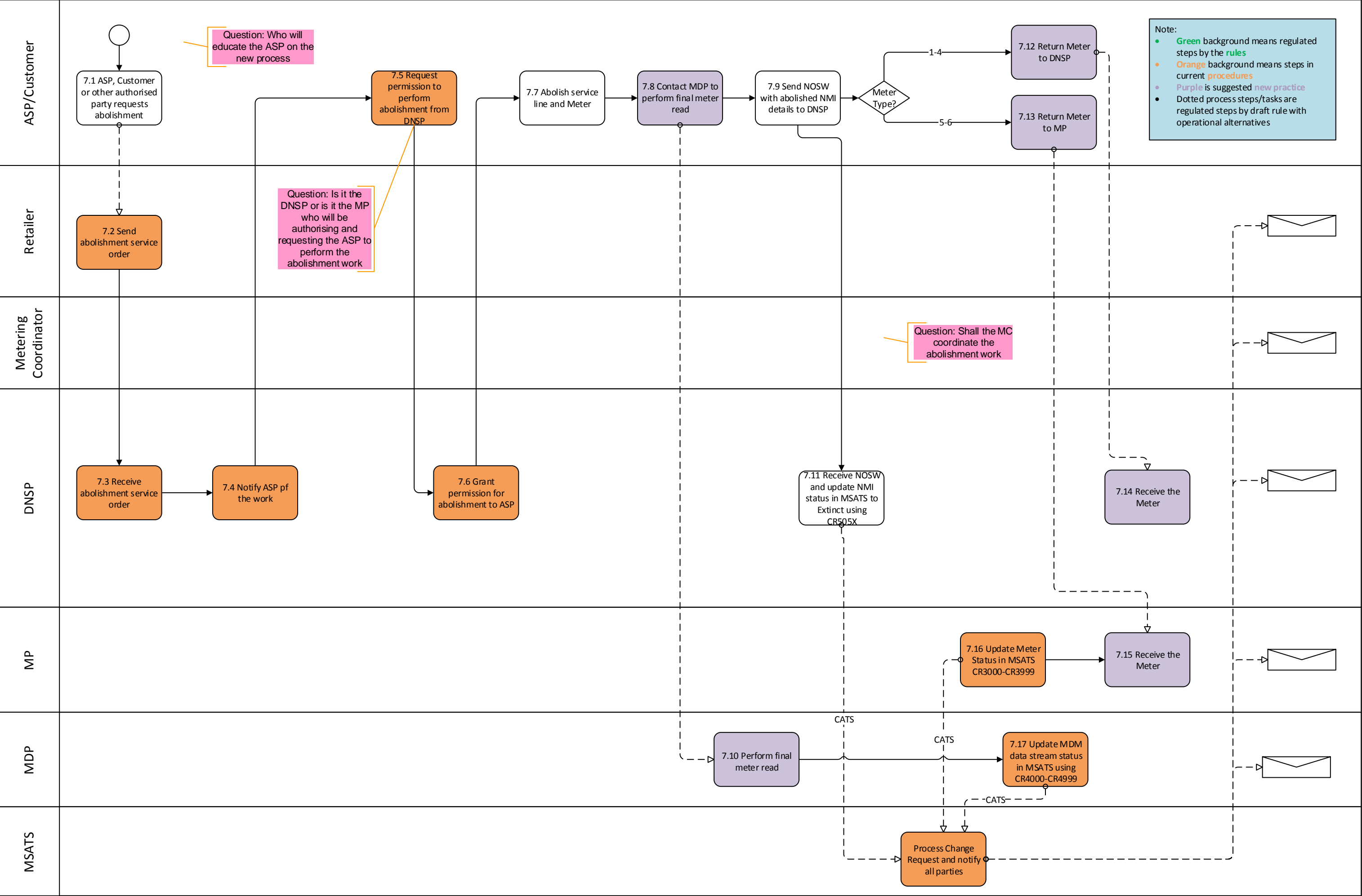


6. Abolishment (Not NSW)	
--------------------------	--

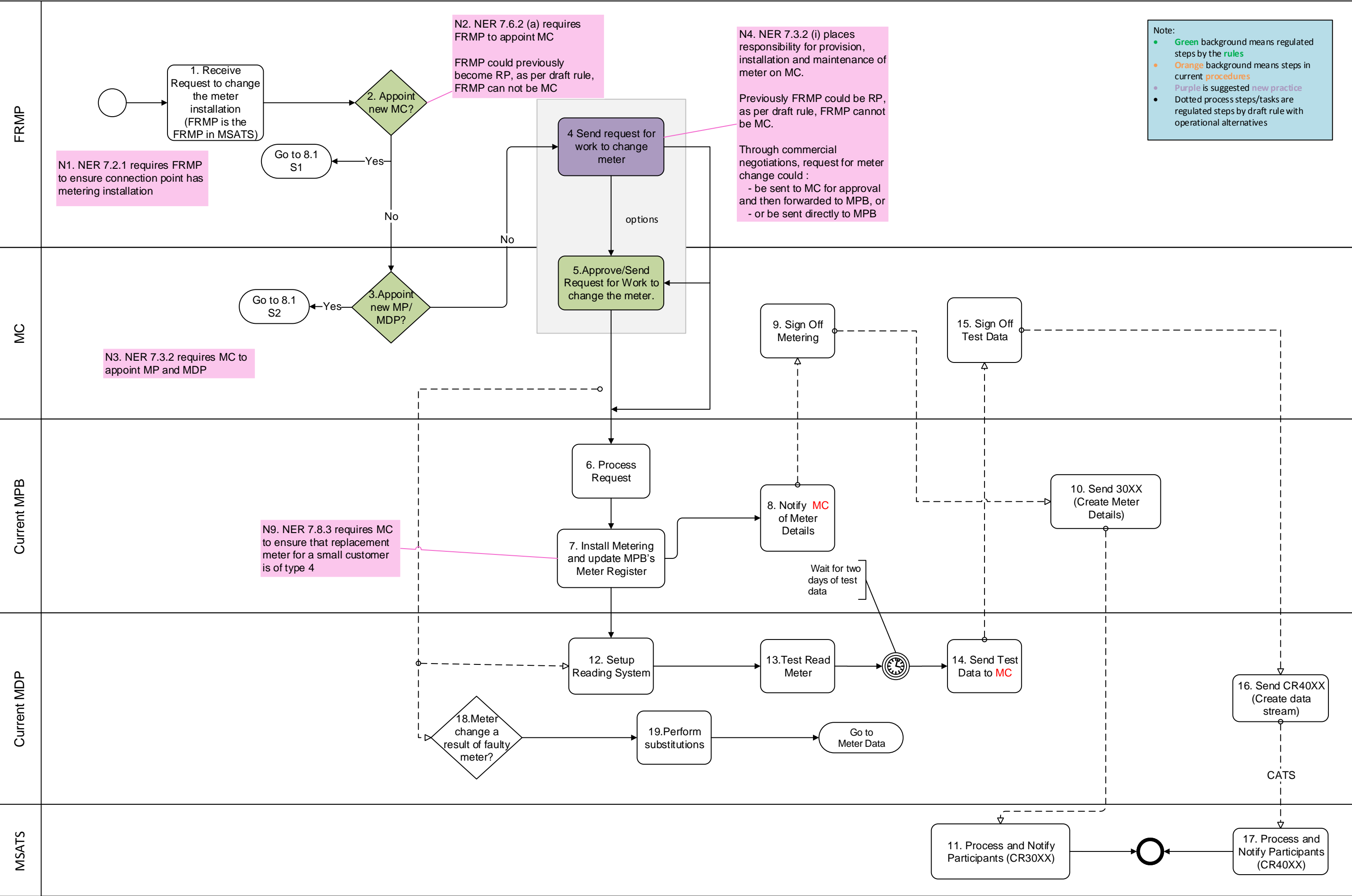


7. Abolishment (NSW)

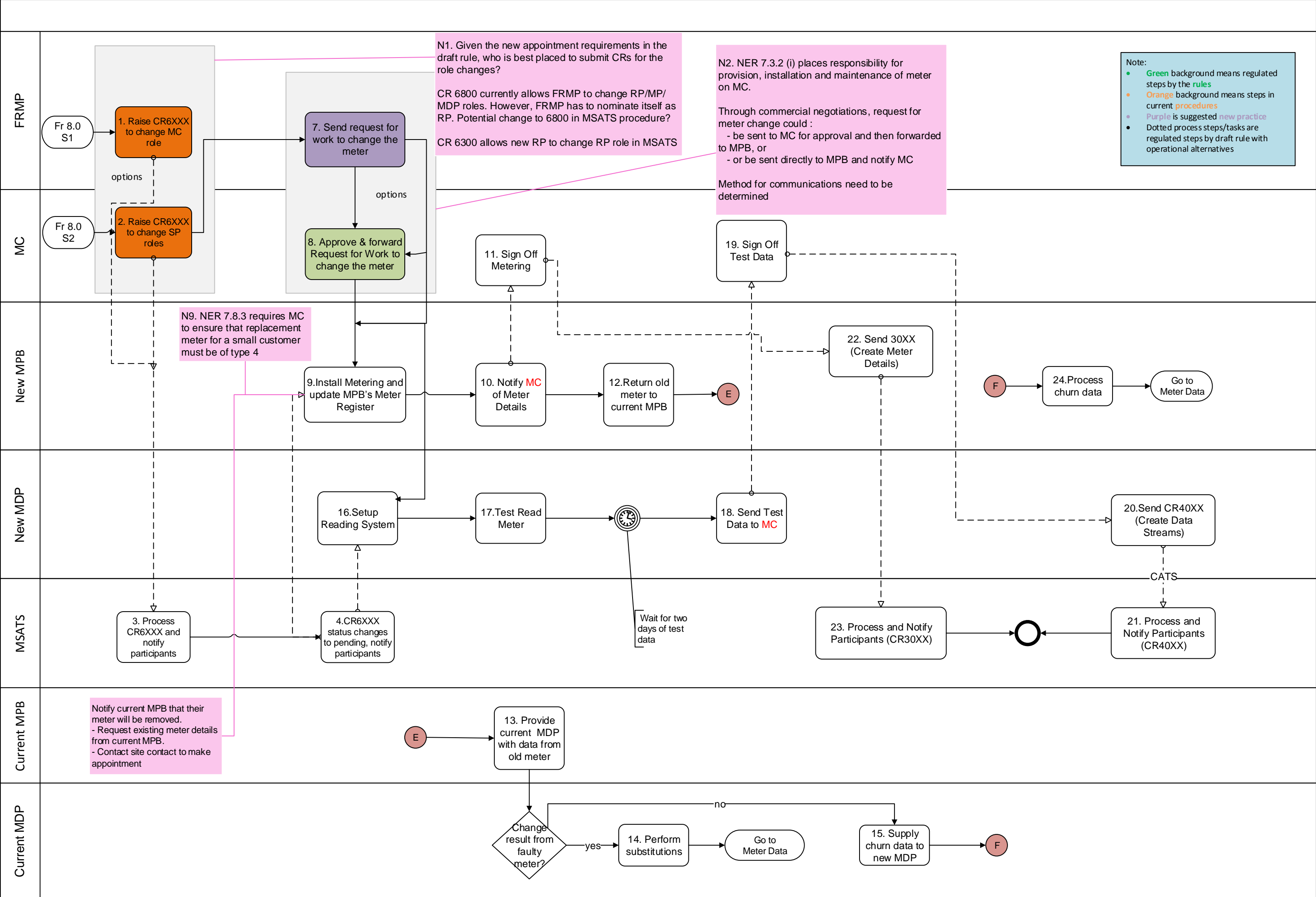
DRAFT (note: this process is currently under review by the NSW government, questions captured on the diagram needs to be considered to correctly map the process)







Process Map 8.1 - Meter Change 1-4 (With role and meter changes) - **DRAFT**



Process Map 8.2 - Meter Change – fault scenario - **DRAFT**

